

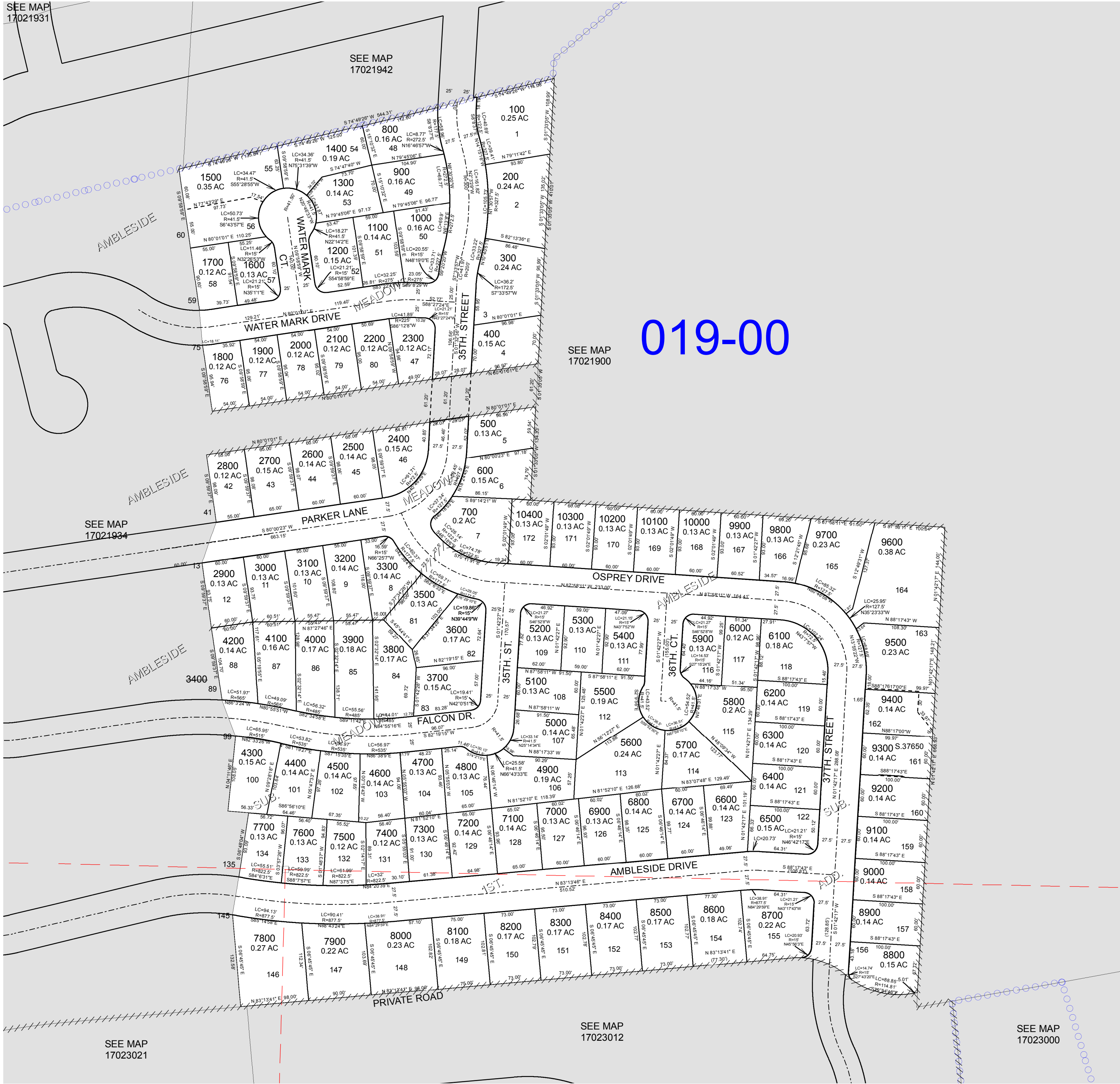
FOR ASSESSMENT AND TAXATION ONLY

S.W.1/4 S.E.1/4 SEC.19 T.17S. R.2W. W.M.
Lane County
1" = 100'

17021943
SPRINGFIELD

GIS DATA
9/28/2010 2:54:25 PM : lcatbhh

CANCELLED:
3400



019-00

REVISIONS:
9/27/2010 - LCAT142 - CONVERT MAP TO GIS

SPRINGFIELD
17021943